



P-ISSN: 2349-8528

E-ISSN: 2321-4902

IJCS 2018; 6(6): 2921-2926

© 2018 IJCS

Received: 16-09-2018

Accepted: 18-10-2018

Jagan Singh Gora

ICAR-Central Institute for Arid Horticulture, Bikaner, Rajasthan, India

Ramesh Kumar

ICAR-Central Institute for Arid Horticulture, Bikaner, Rajasthan, India

BD Sharma

ICAR-Central Institute for Arid Horticulture, Bikaner, Rajasthan, India

Chet Ram

ICAR-Central Institute for Arid Horticulture, Bikaner, Rajasthan, India

Kamlesh Kumar

ICAR-Central Institute for Arid Horticulture, Bikaner, Rajasthan, India

Correspondence**Jagan Singh Gora**

ICAR-Central Institute for Arid Horticulture, Bikaner, Rajasthan, India

Determination of morphological diversity for seed and seedling characteristics in citrus rootstocks

Jagan Singh Gora, Ramesh Kumar, BD Sharma, Chet Ram, Kamlesh Kumar

Abstract

Citrus is an important fruit crop worldwide for its commercial and medicinal values. The successful cultivation of the citrus is depends on potentiality of the rootstock. In the present study, six rootstocks were morphologically characterized to assess the diversity at seeds and seedling stage. Among the rootstocks analyzed, CRH-12 is found better overall performance regarding to the seed parameters. Regarding to the seedlings and leaf characters, NRC-03 and Trifoliolate type rootstocks were found better in unifoliolate and trifoliolate group respectively. The PCA analysis for morphological parameters of rootstocks revealed grouping of rootstocks according to the types. The clustering analysis based on morphological parameters of citrus rootstocks grouped them into two major groups according to seed and seedling characters. The Rangpur lime and Volkameriana is categorized in one grouped whereas CRH-12, CRH-47, Trifoliolate orange and NRC-03 grouped in another group. The study can be undertaken for evaluating variation and association among citrus rootstocks which could provide beneficial information for further crop improvement programs in citrus at initial stage.

Keywords: Citrus rootstocks, morphology, seedling, PCA, clustering

Introduction

Citrus fruit is known globally for its commercial and medicinal value. The importance of citrus is due to the fact that it is the fancy fruit which can be grown in diverse climatic conditions from temperate to tropical and arid regions of the world. The major citrus growing states in the country are Maharashtra, Andhra Pradesh, Telangana, Madhya Pradesh, Punjab, Bihar, Gujarat and Rajasthan. Rajasthan has the reputation of growing the best quality citrus fruits in India (Anonymous, 2015). Citrus fruit has been cultivating in an ever-widening area since ancient times. The genus Citrus belongs to the subtribe Citrineae, the tribe Citreae within the subfamily Aurantioideae of the Rutaceae family (Webber, 1967) [34]. The most recent reports of citrus research indicated that citrus is originated in the Himalayan region (Wu *et al.*, 2018) [40]. But the earlier reports considered that it was originated from the part of Southeast Asia bordered by Northeast India, Burma (Myanmar) and the Yunnan province of China, (Webber, 1967; Scora, 1975; Gmitter and Xulan, 1990; Anonymous, 2010) [34, 30, 18]. The three predominantly known ancestral citrus taxa are citron (*C. medica*), pomelo (*C. maxima*), and mandarin (*C. reticulata*) [Wu *et al.*, 2018] [40]. These taxa interbreed freely, despite being quite genetically distinct, having arisen through allopatric speciation, with citrus species and genera (Curk *et al.*, 2014) [12].

The environmental stresses are badly reduced 30 to 60 per cent citrus production and productivity as well as fruit quality. The main flaws of these obstacles are due to lack of suitable rootstocks in Citriculture (Bar-Joseph and Dawson 2008; Rocha-Pena *et al.* 1995; Byadgi and Ahlawat 1995; Ghosh *et al.* 2018; Lakshmi *et al.* 2014; USDA, 2014) [4, 28, 7, 17, 23]. Various numbers of rootstock are being used at different part of the world with particular interest of citrus. Nevertheless, no single rootstocks have showed the potential against the most affecting stresses (Chadha and Singh, 1990; Castle *et al.*, 1993) [11, 10]. The huge variability in citrus at genera and species level, and other citrus relatives can be plays a pivotal role to boost up the citrus production under limited resources and adverse environmental conditions. Despite this vast cultivation, phylogeny and taxonomy of many citrus rootstocks is remaining uncertain. Many molecular techniques have been developed in studying the genetic diversity, (Susandarini *et al.*, 2013) [33] emphasized the practical importance of morphological characters in horticultural plant species as well as in plant systematic for cultivars identification.

At present, the morphological study is still considered important and has been deployed as an initial step for cultivar identification and diversity assessment at field level (Elameen *et al.*, 2010; Rodriguez *et al.*, 2009) [15, 29]. The recording and compilation of information on the important characteristics which distinguish accessions within a species, enables an easy and quick discrimination among phenotypes. Generally the evaluation and maintenance of germplasm is based on phenotypic features such as morphological, physiological or horticultural descriptions (Diwan *et al.*, 2014) [13]. The traits included in morphological markers are plant height, disease response, photoperiod, sensitivity, shape/ colour of fruits, flowers, seeds, leaves etc. Therefore, the present study was undertaken to evaluate the extent of variation and association among citrus rootstocks which could provide beneficial information for further crop improvement programs in citrus at initial stage.

Material and Methods

Seeds of six citrus rootstocks were obtained from ICAR-Central Citrus Research Institute, Nagpur and Centre of Excellence for Fruits, Sirsa, Haryana. Hundred seeds of each rootstock were sown individually in single cell of portrays and transplanted into polythene bag (45x30 cm) in nursery at ICAR-Central Institute for Arid Horticulture, Bikaner, during 2017-2018. The seedlings were maintained under net-house with regular watering and fertilization. The weight of individual seed and 1000 seeds (test weight) were taken by digital balance (Denver Instruments, New York), and seed diameters and thickness were measured by digital Vernier Caliper. The germination of seeds was observed till the complete germination and the percentage of seed germination was calculated manually. For the polyembryonic observations, the young seedlings were pulled out gently without disturbing the attached germinated seeds. The seeds given more than one seedlings were considered as polyembryonic seedling and the percentage of polyembryony was calculated manually. The survivability percentage of seedling were counted at the time of transplanting the seedling and expressed as (no. of transplantable seedling/total no. of germinated seeds) x 100. The off type (albinism) seedling were counted based on the colour variation i.e. white colour phenotype of the seedling till 2-3 weeks after germination of the seeds. Ten saplings were used to measure the plant height, stem diameter, number of branches, number of internodes and Internodal length and leaf area by using manual measurements. Further the morphological characteristics of leaf used to characterize and describe the rootstock genotypes were followed based on the descriptor prescribed by the International Plant Genetic Resource Institute (IPGR) (Anonymous, 1999) [2], Rome; and Citrus

resources (Citrus ID), USA (Amanda and Trice, 2011) [1]. The statistical analysis was done using Microsoft excel. The Principal Component Analysis (PCA) and value based heat map was generated using Clust Vis software (Tauno and Jaak, 2015) [24].

Result and Discussion

Seed and seed germination parameters of citrus rootstocks

Seed quality parameters were significantly varied in different citrus rootstocks analyzed in the present study (Table 1). The seed boldness parameters were highest in CRH-12 i.e. test weight (253.8 mg) seed width (8.03 mm), seed diameters (88.01 mm), whereas it was observed minimum in CRH-47 regards to test weight (59.0 mg) and thickness (2.86 mm), and seed width (4.61 mm) was in Rangpur lime. The earliest germination at 38 days after sowing (DAS) with maximum germination per cent (85.6 %) were observed in NRC-03, whereas maximum days for germination (43.25 DAS) and minimum germination percent (42.93%) were observed in trifoliolate orange and Volkamericana, respectively. The survivability of seedling after germination was observed maximum in Volkamericana (83.5%) and minimum in Rangpur lime (55.47%). The maximum albinism was recorded in Rangpur lime (51.06%) followed by CRH-47 (31.21%) and NRC-03 (26.9%). Whereas, the minimum albinism was recorded in CRH-12 (17.36%) and Volkamericana (20.53%). The strong polyembryony behavior was showed by trifoliolate orange (41.66%) and NRC-03 (40.84%) but non-significantly however, it was the poorest in CRH-12 (6.05%). In present study, we speculated that seed weight and diameter may be correlated with polyembryony, albinism and survivability of the seedlings. It also observed that seed germination and survivability depend on the kind of rootstocks, seed quality, seed moisture, growing media and environmental conditions. The higher seed weight and diameter of seed were having higher polyembryony and survivability as well as lower albinism. The possible explanation because of higher weight and size of seed possessed more portion of endosperm nourished the growing seedlings (Bewley and Black 1994; Bowman, *et al.*, 1995; Ohta and Ishibashi, 1957) [5, 6, 25]. Similarly, polyembryony conditions also vary with type of rootstocks (Atabekova, 1957) [3], mode of pollination and age of tree (Furusato *et al.*, 1957; Filho *et al.*, 2002) [3], environment and growing conditions (Carvalho and Silva 2013) [9]. It was also reported that polyembryonic seedlings shown better tolerance to salinity stress (Gora *et al.*, 2017; 2018) [19, 18]. According to Frost and Soost (1968) [16], polyembryony rate was varied from 13% (cross-pollination) to 73% (selfing-pollination) in citrus rootstocks. Thus, the observations recorded by these groups supported our study.

Table 1: Morphological characteristics of seed and germinations in citrus rootstocks

Rootstocks	Test weight (mg)	Seed length (mm)	Seed width (mm)	Seed diameter (mm)	Seed thickness (mm)	Germination (Days)	Germination (%)	Survivability (%)	Albinism (%)	Polyembryony (%)
CRH-12	253.8	10.95	8.03	88.01	5.20	36.25	67.91	80.38	17.36	20.84
Trifoliolate orange	83.8	8.46	5.12	43.3	4.24	43.25	81.11	78.1	23.35	41.66
Rangpur lime	67.0	11.56	4.61	53.36	3.58	39.75	58.72	55.47	51.06	19.75
Volkamericana	119.8	13.2	5.45	72.28	4.98	41.50	42.93	83.5	20.53	27.05
CRH-47	59.0	9.16	4.64	42.48	2.86	38.00	62.79	73.6	31.21	6.05
NRC-03	89.8	8.92	5.54	49.39	4.72	33.75	85.6	76.98	26.9	40.84
SEm±	4.76	0.33	0.27	3.62	0.20	0.98	1.17	1.02	1.12	1.35
CD at 5%	14.03	0.98	0.79	10.67	0.59	2.98	3.44	3.01	3.29	3.97

Leaf morphometric analysis of citrus rootstocks

Regarding to leaf morphometric analysis, we observed similar pattern of leaves of citrus rootstocks accordance to IPGR, Rome; and Citrus resources (Citrus ID), USA suggested leaf morphological parameters (Table 2 and Fig 1). Three rootstocks viz. Rangpur lime, Volkamericana and NRC-03 showed unifoliate type of leaves whereas CRH-12, CRH-47

and trifoliate orange showed trifoliate type leaves. The leaf apex was observed acute type in CRH-12, CRH-47 and Volkamericana and obtuse type in the remaining rootstocks. The leaf margin and lamina shape were similar in all rootstocks except it was serrated type in Rangpur lime. The leaf texture was observed rough in trifoliate type rootstocks whereas it was smooth in unifoliate type of rootstocks.

Table 2: Variability for leaf characters of citrus rootstocks

Parameters	Leaf type	Leaf apex	Leaf margin	Leaf lamina shape	Leaf texture
CRH-12	Trifoliate	Acute	Entire	Elliptic	Rough
Trifoliate orange	Trifoliate	Obtuse	Entire	Elliptic	Rough
Rangpur lime	Unifoliate	Obtuse	Serrated	Elliptic	Smooth
Volkamericana	Unifoliate	Acute	Entire	Elliptic	Smooth
CRH-47	Trifoliate	Acute	Entire	Elliptic	Rough
NRC-03	Unifoliate	Obtuse	Entire	Elliptic	Smooth

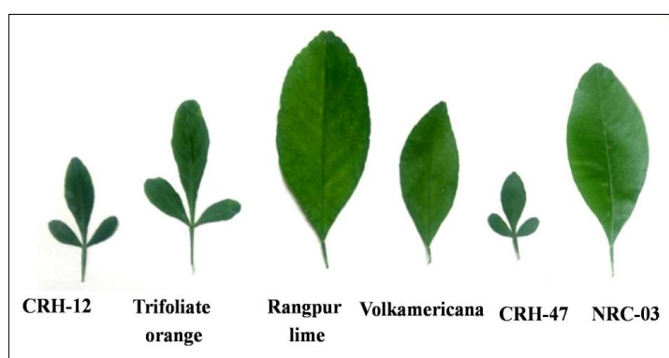


Fig 1: Leaf morphology of citrus rootstocks

Morphometric analysis of nursery seedlings of citrus rootstocks

The morphometric observations of seedlings grown in nursery showed significant variation in rootstocks (Table 3). The seedling vigourness was showed maximum by Volkamericana rootstocks with regards to seedling height (95.4 cm) and, number of internodes (50.6). While the minimum height of

seedling (31.2 cm) with comparatively less number of internodes (19.6) were recorded in CRH-12 rootstocks. Further, stem diameter (9.16 mm), internodal length (2.53 cm) and number of branches (11.2) were also observed maximum in Rangpur lime and minimum in CRH-47 rootstocks. Leaf morphology was also significantly varied in analyzed rootstocks. The leaf length (9.42 cm), leaf width (5.12 cm), leaf area (48.2 cm²) and leaf thickness (0.57 mm) were maximum in NRC-03 while minimum observed in CRH-47 rootstocks. The leaf morphological characteristics also play an important role as classifying citrus species and varieties (Swingle, 1967; Tanaka, 1969; Handa and Oogaki, 1985; Iwata and Ukai, 2002; Camargo Neto *et al.*, 2006 and Du *et al.*, 2007) [34, 35, 21, 22, 8, 14], and pre breeding selection criteria of rootstock breeding. Rough and thick leaf texture with small in size proven leaf longevity, less infected to biotic agents and strict to transpiration checker thus considered more suitable in arid ecosystem (Usman *et al.* 2006; Shokrollah *et al.* 2011; Podda *et al.* 2013) [38, 31]. Besides, it also gives us an idea about their kind of growing habitat as well as their adaptation in different types of environments (Pyakure and Wang, 2013).

Table 3: Morphological analysis of citrus rootstocks seedlings

Parameters	Seedling height (cm)	Stem diameter (mm)	No. of internodes	Internodal length(cm)	No. of branches	Leaf length (cm)	Leaf width (cm)	Leaf area (cm ²)	Leaf thickness (mm)
CRH-12	31.2	4.27	19.6	1.6	4.8	4.18	3.94	16.54	0.41
Trifoliate orange	36.4	4.62	25.2	1.46	3.6	5.04	3.96	19.98	0.5
Rangpur lime	91.6	9.16	37.2	2.53	11.2	8.26	4.26	35.21	0.46
Volkamericana	95.4	8.29	50.6	1.88	9.0	8.98	4.18	37.57	0.5
CRH-47	33.4	4.04	29.6	1.13	0.6	3.74	2.68	10.05	0.4
NRC-03	55.2	5.21	40.4	1.37	6.8	9.42	5.12	48.2	0.57
SEm±	0.89	0.27	1.89	0.09	0.65	0.15	0.10	0.93	0.02
CD at 5%	5.44	0.78	5.57	0.26	1.91	0.44	0.31	2.75	0.04

Clustering analysis of citrus rootstocks based on morphometric parameters

The principle component analysis (PCA) and clustering of data reveals the grouping of organisms and traits based on the similarity among them (Tauno and Jaak, 2015) [24]. Similarly, the citrus rootstocks were classified based on all observed morphometric parameters using PCA and clustering analysis. The PCA analysis revealed the grouping of citrus rootstocks according to their types. For instance, CRH-47 and trifoliate orange were observed as trifoliate type of rootstocks by above studies which were comes into single group in PCA analysis (Fig. 2). Similarly, Volkamericana and NRC-03 were grouped

as single component. Contrary, Rangpur lime and CRH-12 were distinct because were grouped separately (Fig 2). Further, all morphometric observations were clustered in term of heat map (Fig 3). The morphometric parameters were clustered into two major groups with sub-groups in heat map. Similarly, the rootstocks were also clustered accordance to their type. The unifoliate Rangpur lime and Volkamericana were clustered in to a single group and CRH-12, CRH-47, NRC-03 and trifoliate orange were clustered into another groups. The NRC-03, though it comes under unifoliate type, however, it contradictorily grouped with trifoliate based on its morphometric characters (Fig 3).

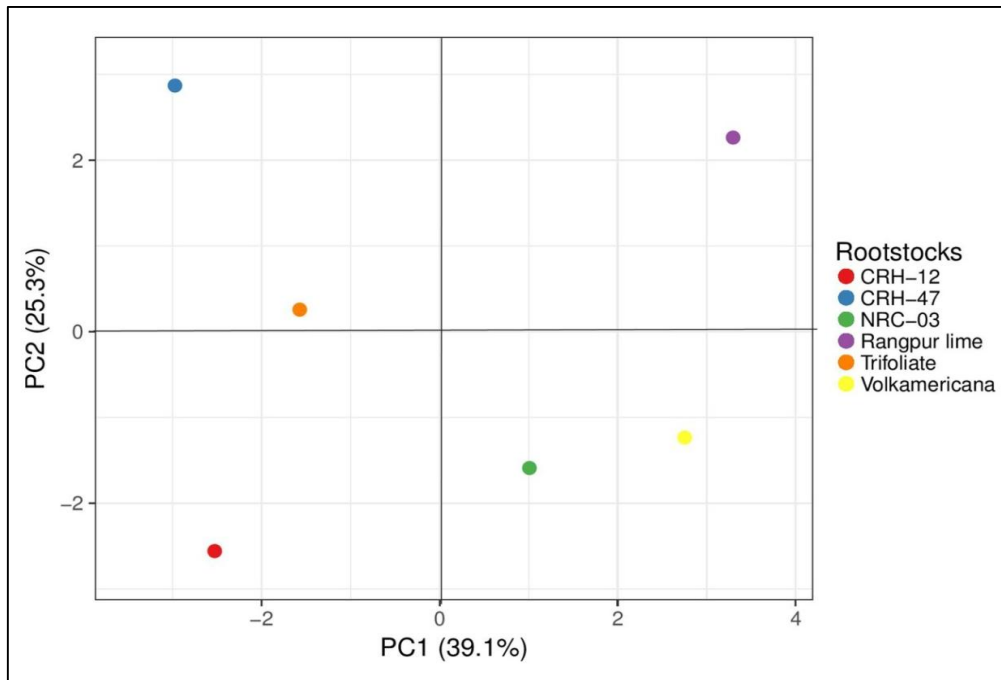


Fig 2: PCA analysis of citrus rootstocks for seed and seedling characteristics.

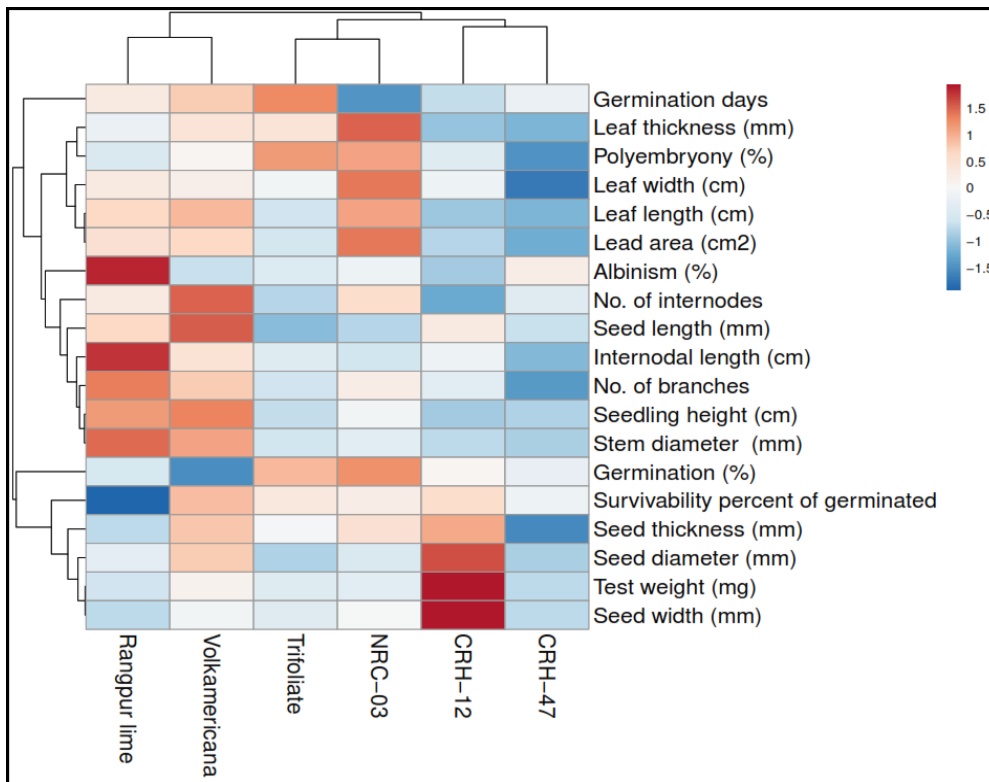


Fig 3: Morphological parameters based clustering of citrus rootstocks for seed and seedling characteristics.

Conclusions

It is concluded that NRC-03 rootstocks is better than other unifoliate type rootstocks studied in the present investigation. It showed strong polyembryony behavior with maximum percentage of germination and specific leaf characters pertaining to the economic important traits. Among trifoliolate group of rootstocks (CRH-12, CRH-47 and trifoliolate orange), trifoliolate orange is better in seed and seedling parameters as well as maximum polyembryony behavior that would be helped in uniform and true-to-type nursery stocks production for budding or grafting. The PCA analysis for morphological parameters of rootstocks revealed grouping of rootstocks according to the types. The clustering analysis based on

morphological parameters of citrus rootstocks grouped them into two major groups according to seed and seedling characters. The Rangpur lime and Volkameriana is categorized in one grouped whereas CRH-12, CRH-47, Trifoliolate orange and NRC-03 grouped into another group.

Acknowledgements

Authors are highly thankful to Director, ICAR-CIAH, Bikaner for providing facility and financial support for conducting the experiment; Director, ICAR-CCRI, Nagpur and Deputy Director Horticulture, CEF, Sirsa, Haryana for providing planting materials.

References

- Amanda JR, Trice MD. Citrus Resource. Identification Technology Program, CPHST, PPQ, APHIS, USDA; Fort Collins CO. [1.3.17], 2011.
- Anonymous. Descriptors for Citrus. International Plant Genetic Resources Institute, Rome, Italy, 1999, 75.
- Atabekova AJ. Polyembryony, supernumerary cotyledons and fasciation in leguminous plants. Bulletin Principal Botany Garden Moscow. 1957; 28:65-70.
- Bar-Joseph M, Dawson WO. *Citrus tristeza virus*, *Encycl. Virol.* 2008; 1:520-525.
- Bewley JD, Black M. Seeds: Physiology of Development and Germination. Plenum Press, New York and London, 1994.
- Bowman Kim D, Gmitter, Frederick G Jr, Hu Xulan. Relationships of Seed Size and Shape with Polyembryony and the Zygotic or Nucellar Origin of *Citrus* spp. Seedlings. *Hort science.* 1995; 30(6):1279-1282.
- Byadgi AS, Ahlawat YS. A new viral ring-spot disease of citrus (*Citrus species*) in India. *Indian J Agricul. Sci.* 1995; 65:763-770.
- Camargo Neto J, Meyer GE, Jones DD, Samal AK. Plant species identification using elliptic Fourier leaf shape analysis. *Computers and Electronics in Agriculture.* 2006; 50:121-134.
- Carvalho SA, Silva LFC. Monitoring the viability of citrus rootstocks seeds stored under refrigeration. *Rev. Bras. Frutic, Jaboticabal – SP.* 2013; 35(1):238-245.
- Castle WS, Tucker DPH, Krezdorn AH, Youtsey CO. Rootstocks for Florida Citrus: Rootstock Selection - The first step to success. Cooperative Extension Service, University Of Florida, Institute of Food and Agricultural Sciences, 1993.
- Chadha KL, Singh HP. *Proc. Citriculture scenario of India.* Abohar, Punjab, 1990, 21-64.
- Curk Franck, Ancillo Gema, Garcia-Lor Andres, Luro François, Perrier Xavier, Jacquemoud-Collet Jean-Pierre *et al.* Next generation haplotyping to decipher nuclear genomic interspecific admixture in Citrus species: analysis of chromosome 2. *BMC Genetics.* 2014; 15:152.
- Diwan K, Naik DM, Vadak Y, Taru AS, Maholiya BK. Variability, correlation and path analysis studies for superior types of sweet orange (*Citrus sinensis* Osbeck). *Int. J of Agricul. Sci.* 2014; 10(2):649-653.
- Du JX, Wang XF, Zhang GJ. Leaf shape based plant species recognition. *Appl. Math. Computation.* 2007; 185: 883-893.
- Elameen A, Larsen A, Sonja SK, Fjellheim S, Msolla S, Masumba E. Phenotypic diversity of plant morphological and root descriptor characters within a sweet potato, *Ipomoea batatas* (L.) Lam., germplasm collection from Tanzania. *Genetic Resources and Crop Evolution.* 2010; 58:397-407.
- Frost HB, Soost RK. Seed reproduction: development of gametes and embryos. In: Reuther, W.; Batchelor, L.D Webber, H.J. (Ed.). *The citrus industry.* Berkeley: University of California Press. 1968; 2(4):290-324.
- Ghosh DK, Bhowse S, Mukherjee K, Baranwal VK. Sequence and evolutionary analysis of ribosomal DNA from Huanglongbing (HLB) isolates of western India. *Phytoparasit.* 2018; 41:295-305.
- Gmitter Frederick, Hu Xulan. The possible role of Yunnan, China, in the origin of contemporary *Citrus* species (Rutaceae). *Economic Botany.* 1990; 44(2):267-277.
- Gora JS, Kumar R, Chet Ram, Singh VK. Biochemical responses of monoembryonic and polyembryonic seedlings of mango rootstocks under salt stress conditions. *International Journal of Chemical Studies.* 2018; 6(6):2199-2203.
- Gora JS, Singh VK, Sarolia DK, Kumar K, Rajkumar, Bhati V. Performance of mango (*Mangifera indica* L.) monoembryonic and polyembryonic seedlings under salt stress condition. *Int. J Curr. Microbiol. App. Sci.* 2017; 6:3051-3056.
- Handa T, Oogaki C. Numerical taxonomic study of Citrus L. and Fortunella Swingle using morphological characters-Application of multivariate analysis - *Journal of the Japanese Society for Horticultural Science.* 1985; 54:145-154.
- Iwata H, Ukai Y. Shape: A computer program package for quantitative evaluation of biological shapes based on elliptic Fourier descriptors. *Journal of Heredity.* 2002; 93:384-385.
- Lakshmi TN, Gopi V, Gouri Sankar T, Sarada G, Lakshmi L, Ramana KTV *et al.* Status of diseases in Sweet orange and acid lime orchards in Andhra Pradesh, India. *Int. J Curr. Microbiol. App. Sci.* 2014; 3:513-518.
- Metsalu, Tauno, Vilo, Jaak. Clustvis: a web tool for visualizing clustering of multivariate data using Principal Component Analysis and heat map. *Nucleic Acids Research.* 2015; 43(1):566-570.
- Ohta K, Ishibashi Y. Studies on polyembryony in citrus. *Seiken Zihō.* 1957; 8:40-48.
- Podda A, Checcucci G, Mouhaya W, Centeno D, Rofidal V, Carratore RD *et al.* Salt-stress induced changes in the leaf proteome of diploid and tetraploid mandarins with contrasting Na⁺ and Cl⁻ accumulation behavior. *J Plant Physiol.* 2013; 170:1101-1112.
- Pyakurel A, Wang JR. Leaf morphological variation among paper birch (*Betula papyrifera* Marsh.) genotypes across Canada. *Open Journal of Ecology.* 2013; 3(4):284- 295.
- Rocha-Pena MA, Lee RF, Lastra R, Niblet CL, Ochoa-Corona FM, Garnsey SM. Citrus tristeza virus and its vector *Toxoptera citricida*. *Plant Dis.* 1995; 79:437-444.
- Rodriguez GB, Sencin LJA, Campos TE, Mora GA, Galindo GJ, Dominguez RJM *et al.* Morphological and molecular diversity of Agave tequilana Weber var. Azul and *Agave angustifolia* Haw. var. Lineo. *Industrial Crops and Products.* 2009; 29:220-8.
- Scora Rainer W. On the history and origin of citrus. *Bulletin of the Torrey Botanical Club.* 1975; 102(6):369-375.
- Shokrollah H, Abdullah TL, Sijam K, Abdullah SA. Potential use of selected citrus rootstocks and interstocks against HLB disease in Malaysia. *Crop Protect.* 2011; 30:521-525.
- Soares Filho W, Dos S, Diamantino MSAS, Moitinho EDB, Cunha Sobrinho APD, Passos OS. 'Tropical': uma nova seleção de tangerina 'Sunki'. *Revista Brasileira de Fruticultura, Jaboticabal.* 2002; 24(1):127-132.
- Susandarini R, Subandiyah S, Rugayah B, Daryono S, Nugroho LH. Taxonomic affinity assesment of Indonesian pummelo [*Citrus maxima* (Burm.) Merr.] based on morphological character. *American Journal of Agricultural and Biological Science.* 2013; 8:182-90.
- Swingle WT. The botany of citrus and its wild relatives. In: Reuther, W., Webber, H.J. and Batchelor, L.D. (Eds) *The Citrus Industry, History, world distribution, botany and varieties,* Univ. California, California. 1967; 1:190-430.

35. Tanaka T. Misunderstanding with regards citrus classification and nomenclature. Bulletin of the University of Osaka Prefecture. 1969; 21:139-145.
36. United Nations Conference on Trade and Development. Market Information in the Commodities Area: Citrus fruits "Characteristics". Archived from the original on 2010-10-05. Retrieved 2010-09-24.
37. USDA, 2014.
http://www.nass.usda.gov/Statistics_by_State/Florida/Publications/Citrus/fcs/2012-13/fcs1213.pdf.
38. Usman M, Saeed T, Khan MM, Fatima B. Occurrence of spontaneous Polyploid in citrus. Hort Sci. 2006; 33:124-129.
39. Webber HJ. History and development of the Citrus industry. In: The Citrus Industry, (Ed.) Reuther W, Webber HJ and Batchelor LD, University of California Press, Berkeley. 1967; 1:1-39.
40. Wu GA, Terol J, Ibanez V, López-García A, Pérez-Román E, Borredá C *et al.* Genomics of the origin and evolution of Citrus. Nature. 2018; 554(7692):311-316.