



P-ISSN: 2349-8528

E-ISSN: 2321-4902

IJCS 2019; 7(6): 3052-3061

© 2019 IJCS

Received: 14-09-2019

Accepted: 18-10-2019

Patil PL

Department of Soil Science and
Agricultural Chemistry,
University of Agricultural
Sciences, Dharwad, Karnataka,
India

Deepa Kalappanavar

Department of Soil Science and
Agricultural Chemistry,
University of Agricultural
Sciences, Dharwad, Karnataka,
India

Geetha GP

Department of Soil Science and
Agricultural Chemistry,
University of Agricultural
Sciences, Dharwad, Karnataka,
India

Basavashree Yadawad

Department of Soil Science and
Agricultural Chemistry,
University of Agricultural
Sciences, Dharwad, Karnataka,
India

Adarsh GS

Department of Soil Science and
Agricultural Chemistry,
University of Agricultural
Sciences, Dharwad, Karnataka,
India

Dasog GS

Department of Soil Science and
Agricultural Chemistry,
University of Agricultural
Sciences, Dharwad, Karnataka,
India

Corresponding Author:**Patil PL**

Department of Soil Science and
Agricultural Chemistry,
University of Agricultural
Sciences, Dharwad, Karnataka,
India

Identification of soil fertility constraints by GIS in Domanal sub watershed under northern dry zone of Karnataka for site specific recommendations

Patil PL, Deepa Kalappanavar, Geetha GP, Basavashree Yadawad, Adarsh GS and Dasog GS

Abstract

Soil samples from Domanal sub-watershed in northern dry zone of Karnataka were drawn at 320 m grid interval and assessed for their fertility parameters. Analytical data was interpreted and statistical parameters like range, mean standard deviation, coefficient of variation, kurtosis and skewness were calculated for each parameter. Soil fertility maps were prepared for each parameter under GIS environment using Arc GIS v 10.4. Soils were slightly alkaline to strongly alkaline with non saline to slight salinity. Majority of area in micro-watershed is low to medium in nitrogen and available phosphorous, soil organic carbon, available potassium was low to high, available boron was low to medium and sulphur was medium. Regarding available micronutrients, zinc and iron were deficient in more than half of the sub watershed area, whereas copper and manganese were sufficient in the soils. The mapping of nutrients by GIS technique in the sub watershed revealed that, available N, P, S, Zn and Fe are important soil fertility constraints.

Keywords: Soil fertility map, watersheds, soil fertility constraints, nutrients

Introduction

Intensively cultivated soils are being depleted with available nutrients especially micronutrients. Therefore, assessment of nutrient constraints of soils that are being intensively cultivated with high yielding crops needs to be carried out. Soil testing is usually followed by collecting composite soil samples in the fields without geographic reference. The results of such soil testing are not useful for site specific recommendations and subsequent monitoring. Soil available nutrients constraints of an area using Global Positioning System (GPS) will help in formulating site specific balanced fertilizer recommendation and to understand the status of soil fertility spatially and temporally. Geographic information system (GIS) is a powerful tool which helps to integrate many types of spatial information such as agro-climatic zone, land use, soil management, *etc.* to derive useful information (Adornado and Yoshida 2008) ^[1]. It has been documented very well that dryland soils are not only thirsty but hungry too (Wani 2008) ^[19] meaning that besides soil and water conservation, if nutrient management issues are addressed, the productivity of a watershed is further enhanced. Some studies on soil fertility status at representative micro-watershed/village level have been carried out at University of Agricultural Sciences, Dharwad for a few agro ecological zones. Such information is not available for contiguous micro watersheds or for a sub watershed in Karnataka and is essential in planning soil fertility management on a sub watershed area basis. The proposed study was planned with the objective of identifying available nutrients constraints in soils of Domanal sub watershed in northern dry zone of Karnataka.

Materials and Methods

The Domanal Sub-watershed is located in Vijayapura taluka of Vijayapura district covering an area of 4835.57 ha (Fig 1.0), falling under Northern Dry Zone of Agro climatic Zones of Karnataka. The sub-watershed consists of eight micro watersheds having undulating topography with a forest area. The peninsular gneiss covers the sub-watershed area. The

predominant minerals observed in the peninsular gneiss are oligoclase and orthoclase feldspar. The climate of the area is semi-arid or hot tropical and monsoonic type. The maximum temperature during summer is 42.7 °C and the minimum 16.1 °C in winter. Mean maximum temperature was 36.56 °C and mean minimum temperature was 20.43 °C (Table 2). The average annual rainfall is 580.7 mm. It is well distributed with southwest monsoon (June to September) bringing 365mm and northeast monsoon about 200 mm rain during October and November months.



Fig 1: Location map of Domanal sub watershed

Surface composite soil samples were collected during April 2016 on grid points of 320 m interval in the study area and the sample location was recorded by GPS. A total of 536 samples were collected from the sub watershed. Micro watershed wise soil sample details are furnished in table 1.

Table 1: Details of soil sampling in Domanal sub watershed

Micro watershed	Code	Area(ha)	No. of Samples
Bommanahalli	4D5A6D2d	564.97	56
Domanal-1	4D5A6D1b	719.31	65
Domanal-2	4D5A6D1c	468.27	44
Gunaki	4D5A6D2e	420.98	38
Lamani Tanda	4D5A6D1a	736.41	123
Lidagundi-1	4D5A6D2c	831.13	68
Lidagundi-2	4D5A6D2a	533.70	78
Lidagundi-3	4D5A6D2b	560.79	64
Total		4835.57	536

The soil samples were air-dried, ground (< 2 mm) and analyzed for chemical and fertility parameters. The pH (1:2.5) and electrical conductivity (EC) (1:2.5) of soils were measured using standard procedures as described by Jackson (1973). Organic carbon (OC) was determined using the Walkley-Black method (Nelson and Sommers 1996) [4]. Available nitrogen (N) was estimated by modified alkaline permanganate method (Sahrawat and Burford, 1982) [13]. Available phosphorus (Olsen P) was measured using sodium bicarbonate (NaHCO₃) as an extractant (Olsen and Sommers 1982) [5]. Available potassium (K) was determined using the ammonium acetate method (Helmke and Sparks 1996) [2-4,18]. Available sulphur (S) was measured using 0.15% calcium chloride (CaCl₂) as an extractant (Tabatabai 1996) [18]. Micronutrients (Fe, Zn, Cu and Mn) were extracted by DTPA reagent using the procedure outlined by Lindsay and Norvell (1978) [3]. Variability of data was assessed using mean standard deviation and coefficient of variation for each set of data. Availability of N, P, K, S and B in soils are interpreted as low, medium and high and that of available zinc, iron, copper and manganese interpreted as deficient and sufficient by following the criteria given in table 2.

A dbf file consisting of data for X and Y co-ordinates in respect of sampling site location was created. A shape file (Vector data) showing the outline of Domanal sub watershed area was created in Arc GIS 10.4. The dbf file was opened in the project window and in X-field, "longitudes" and in Y-field, "latitudes" were selected. The Z field was used for different nutrients. The Domanal sub watershed file was also opened and from the "Surface menu" of Arc GIS geo-statistical Analyst, "geo statistical wizard" option was selected. On the output "grid specification dialogue", output grid extend chosen was same as Domanal sub watershed and the interpolation method employed was krigging. Then map was re classified based on ratings of the respective nutrients (Table 2) and area for each category of nutrient was calculated.

Table 2: Soil fertility ratings for available nutrients

Nutrients	Fertility rating major nutrients		
	Low	Medium	High
Organic carbon (g kg ⁻¹)	<5	5-7.5	>7.5
Macronutrients (kg ha⁻¹)			
Nitrogen (N)	<280	280-560	>560
Phosphorus(P ₂ O ₅)	<22.5	22.5-55	>55
Potassium (K ₂ O)	<140	140-330	>330
Sulphur (S) (mg kg ⁻¹)	<10	10-20	>20
Micronutrients (mg kg⁻¹)	Deficient	Sufficient	Excess
Zinc (Zn)	<0.6	0.6-1.5	>1.5
Iron (Fe)	<2.5	2.5-4.5	>4.5
Copper (Cu)	<0.2	0.2-5.0	>5.0
Manganese (Mn)	<2.0	2-4	>4.0

Results and Discussion

Soil reaction and electrical conductivity

Soils of the Domanal sub-watershed were neutral to alkaline in reaction (7.34 to 9.13) with a mean pH of 8.29, standard deviation of 0.35 and coefficient of variation of 4.25 (Table 3). Higher soil reaction in the sub watershed is mainly because of calcareousness nature and sodicity of the soils. The coefficient of variation of soil pH indicates that, spatially it did not vary. Mapping of soil pH by GIS technique resulted in three soil reaction classes (Fig. 2). They are; Slightly alkaline (7.3 – 7.8), Moderately alkaline (7.8 – 8.4), Strongly alkaline (8.4 – 9.0). Major proportion of the sub watershed area (Fig 2) was moderately alkaline (55.51%) followed by strongly

alkaline (34.55%) and slightly alkaline (1.37%). The higher pH of soils could be attributed to low intensity of leaching and accumulation of bases. (Ravi kumar *et al.*, 2007a, and Prabhavati *et. al* 2015) [11, 9]. The EC of soils in the sub-watershed was in the range of 0.04 to 0.94 dSm⁻¹ with mean value of 0.20 dSm⁻¹ and standard deviation of 0.15. The CV (73.86) of EC values indicate that salt content in the sub watershed varied spatially. Higher level of soluble salts in the study area is due to arid climatic condition. GIS Mapping of soluble salt content in the sub watershed (Fig 3) revealed that, 91.31 per cent of the area was non saline whereas and 0.12 per cent of the area was slightly saline.

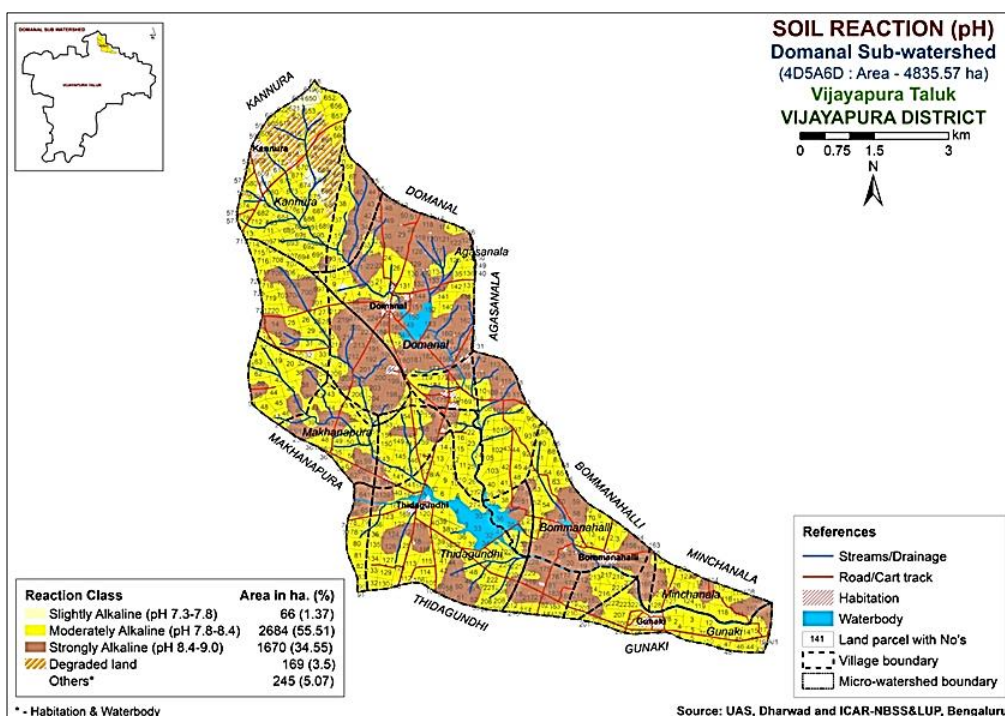


Fig 2: Soil Reaction status of Domanal Sub watershed

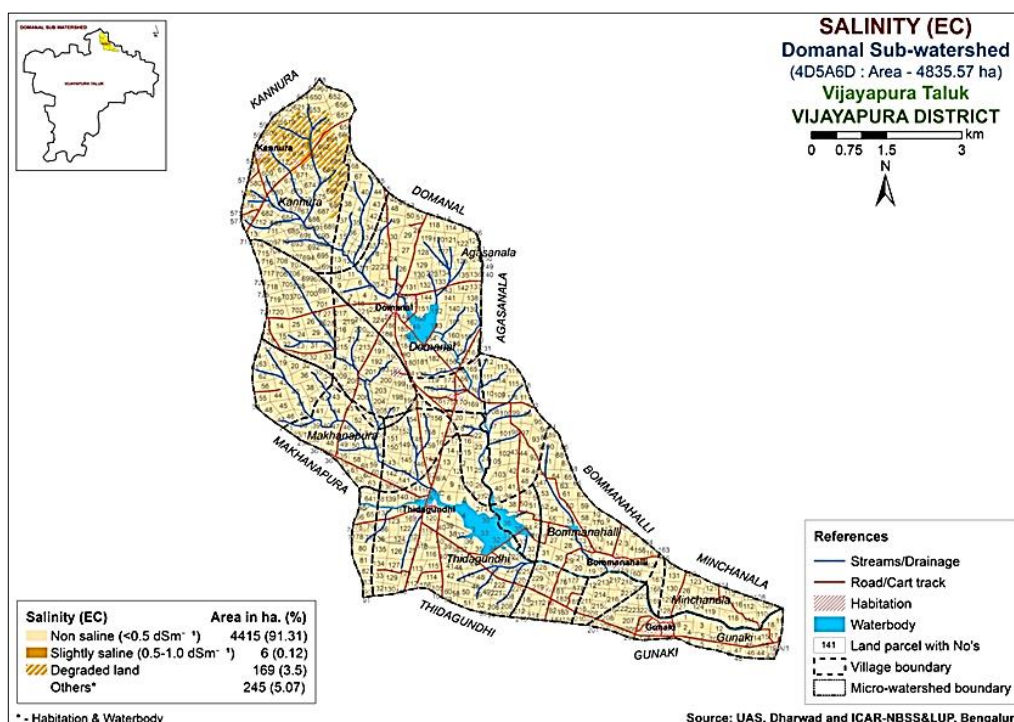


Fig 3: Salinity status of Domanal Sub watershed

Organic carbon

Organic carbon content of soils of Domanal sub watershed was ranged from 0.19 to 3.60 gkg⁻¹ with mean and standard deviation value of 0.47 and 0.29 gkg⁻¹ respectively. The CV (62.20) for OC content indicates that, in the sub watershed SOC varied spatially (Table 3). GIS Mapping of OC by GIS revealed that 54.76 per cent of the study area was low in organic carbon, 35.05 per cent area was medium and 1.62 per cent area was high in soil organic carbon status (Fig 4). The values obtained in the present study are in agreement with those reported by for, Ravi kumar *et al.*, (2007a) [11-12] and

Patil *et al.*, (2011) [8] for black soils of Malaprabha command area of Karnataka. The reason for low organic carbon content in these soils may be attributed to the prevalence of arid condition, where the degradation of organic matter occur at a faster rate coupled with little or no addition of organic manures and low vegetative cover on the fields, thereby leaving less chances of accumulation of organic carbon in the soils. Intensive cropping is also one of the reasons for low organic carbon content. The similar results were also reported by Prabhavati *et al* (2015) [9] for the soils of northern dry zone of Karnataka.

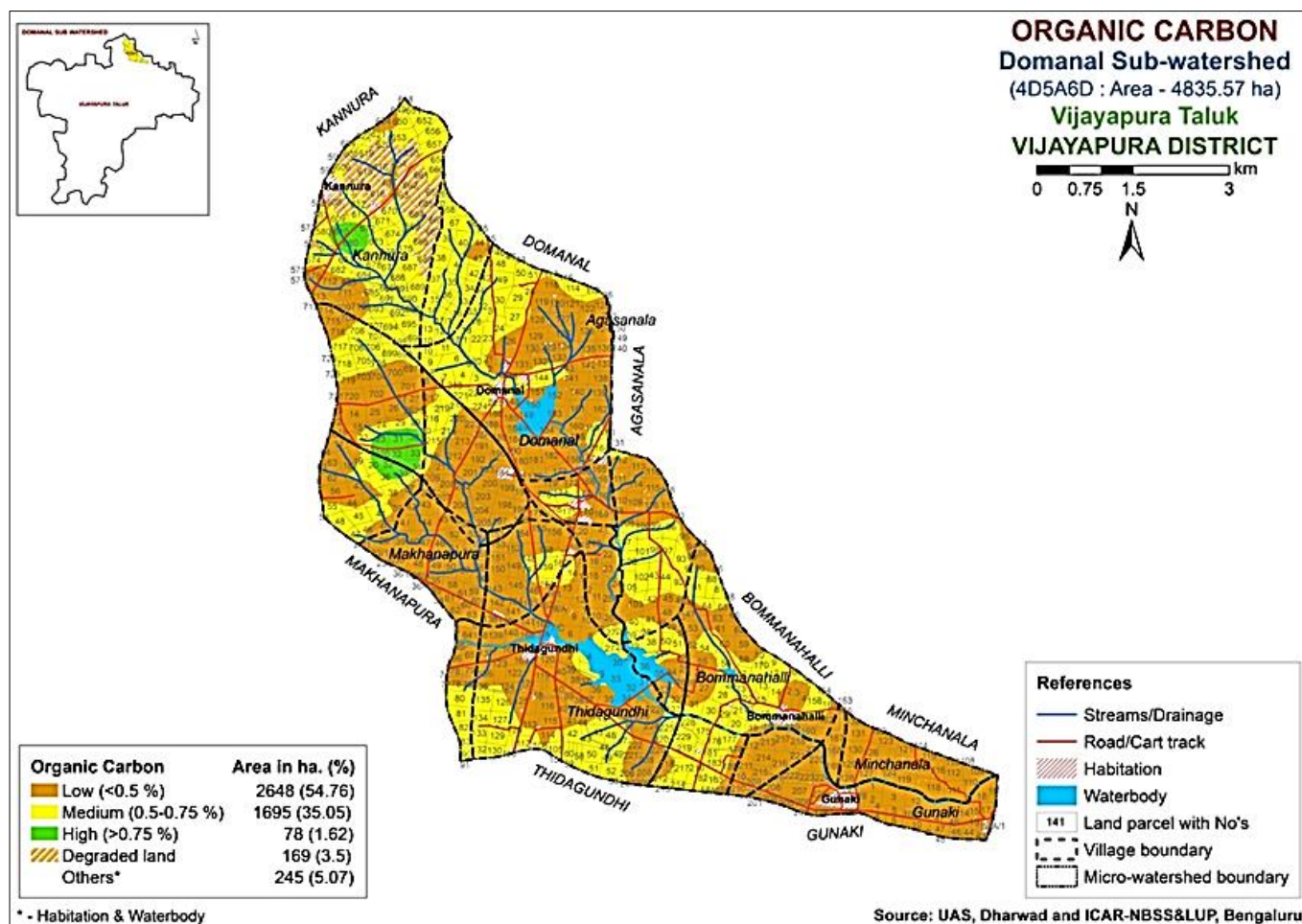


Fig 4: Soil Organic carbon status of domanal sub watershed

Table 3: Chemical properties and available major nutrients status in Domanal sub watershed

	pH	EC dSm ⁻¹	OC gkg ⁻¹	N	P ₂ O ₅ Kg ha ⁻¹	K ₂ O	S mgkg ⁻¹
Average	8.29	0.20	0.47	162.40	21.57	269.41	13.73
SD	0.35	0.15	0.29	65.99	6.93	153.61	3.40
Range	7.34-9.13	0.04-0.94	0.19-3.60	55-389	13.4-48.4	121-1010	6.3-29.2
CV	4.25	73.86	62.20	40.63	32.13	57.02	24.78

Available macronutrients

The available N in soils of the sub watershed ranged from 55 to 389 kg ha⁻¹ with a mean of 162 kg ha⁻¹ and SD of 65.99. The CV value of 40.63 indicates that available N in soils varied spatially. GIS mapping revealed that, the entire sub watershed was low to medium in the available nitrogen (Table 3 and Fig 5). The low N content could be attributed to soil management, varied application of FYM and fertilizer to previous crops. Nitrogen is the most limiting nutrient in black soils as its availability decreases due to fixation and volatilization losses. Another possible reason may also be due

to low organic matter content in these areas due to low rainfall and high temperature which facilitate faster degradation and removal of organic matter leading to nitrogen deficiency. Similar nitrogen status was reported by Pulakeshi *et al.*, (2012) [10] in non-saline clay to sandy loams and calcareous soils.

The available P₂O₅ content of the sub watershed was ranged from 13.4 to 48.4 kg ha⁻¹ with average and SD value of 21.5 and 6.93 kg ha⁻¹ respectively. The CV for available P₂O₅ distribution in the sub watershed indicates that, it was varied spatially. Mapping of available P₂O₅ by GIS revealed that,

available P_2O_5 was low in 58.45 per cent of the study area whereas, it was medium in 32.98 per cent of the study area (Table 3 and Fig 6). Low P_2O_5 availability in these soils is related to their high pH, calcareousness and low organic matter content. Ravi kumar *et al.*, (2007a) ^[11-12] and Patil *et al.*, (2011) ^[8] reported for black soils of Malaprabha command area of Karnataka that available P_2O_5 status in the soils was low due to high calcium carbonate content. The present findings are in line with those of Shiva Prasad *et al.* (1998) ^[15] who reported that majority of the soils in Karnataka were medium in phosphorus content.

The available K_2O content in the sub watershed was ranged from 121 to 1010 $kg\ ha^{-1}$ with mean and SD value of 269 and 153.61 $kg\ ha^{-1}$ respectively. The CV (57.02) for available K_2O content indicates that, it varied spatially in the sub watershed. Mapping of available K_2O content in the sub watershed by GIS revealed that, 72.64 per cent of the of the study area was in medium category (Table 3 and Fig 7), 18.28 per cent of the of the study area was in high category and 0.51 per cent of the study area is low category. It is reported that, invariably the

surface soils had higher concentration of water soluble and exchangeable K in Karnataka (Patil *et al.*, 2011) ^[8]. Soils are able to maintain a sufficient or even high level of exchangeable K and provide a good supply of K to plants for many years. The higher content of available potassium in soils of Domanal sub watershed may be due to the predominance of potash rich micaceous and feldspar minerals in parent material. Similar results were observed by Srikant *et al.*, (2008) ^[17].

The available sulphur content of soils of the sub watershed varied from 6.3 to 29.20 $mg\ kg^{-1}$ soil with mean and SD values of 13.7 and 3.40 $mg\ kg^{-1}$ soil respectively. The CV (24.78) for available S content indicates that, in the sub watershed available S varied spatially. GIS mapping of available S revealed that, the entire area under study was medium in available sulphur status (Table 3 and Fig 8). Low and medium level variation of available sulphur was due to lack of sulphur addition and continuous removal of S by crops (Shankaraiah *et al.* 2006) ^[14].

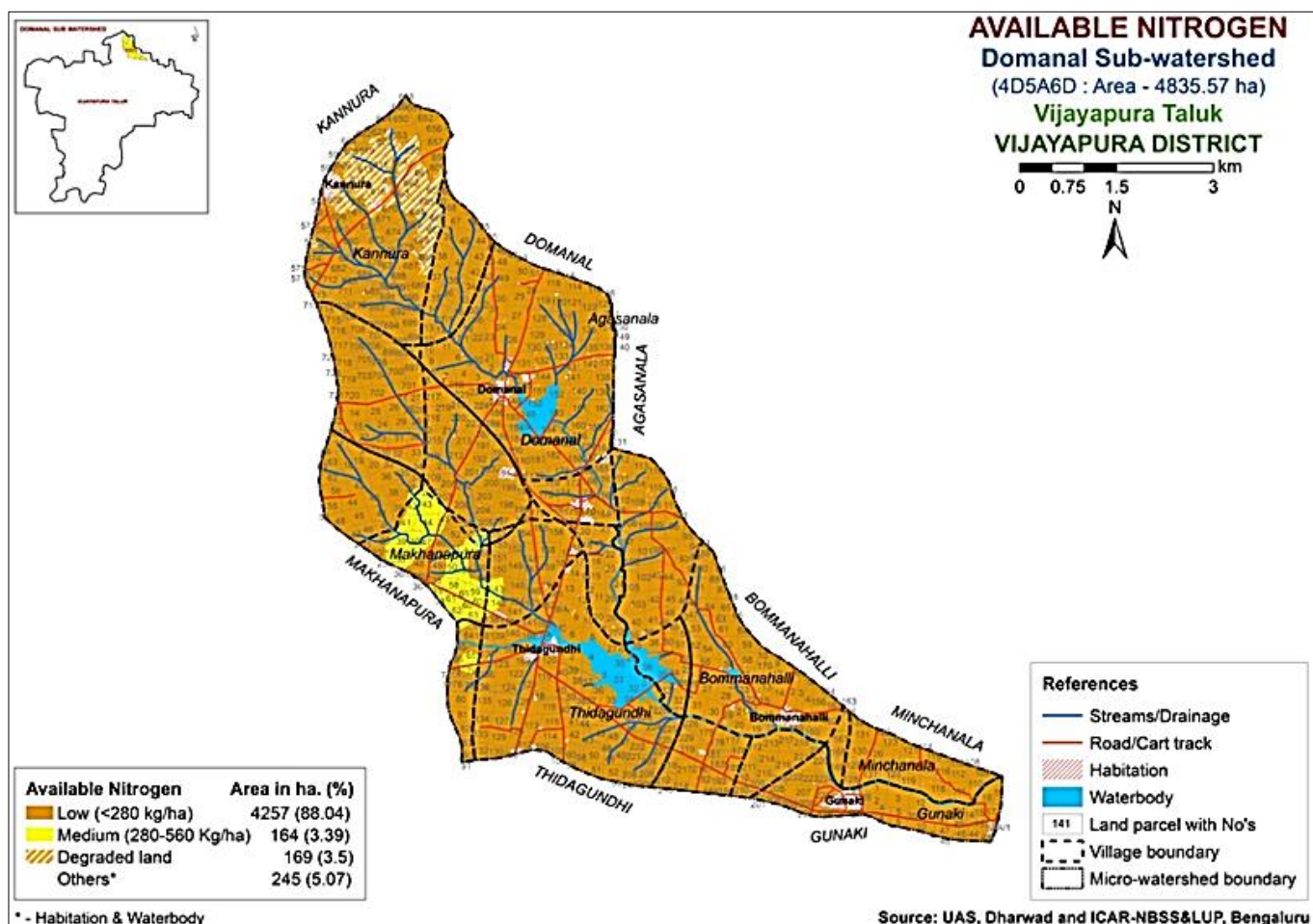


Fig 5: Available Nitrogen status of Domanal Sub watershed

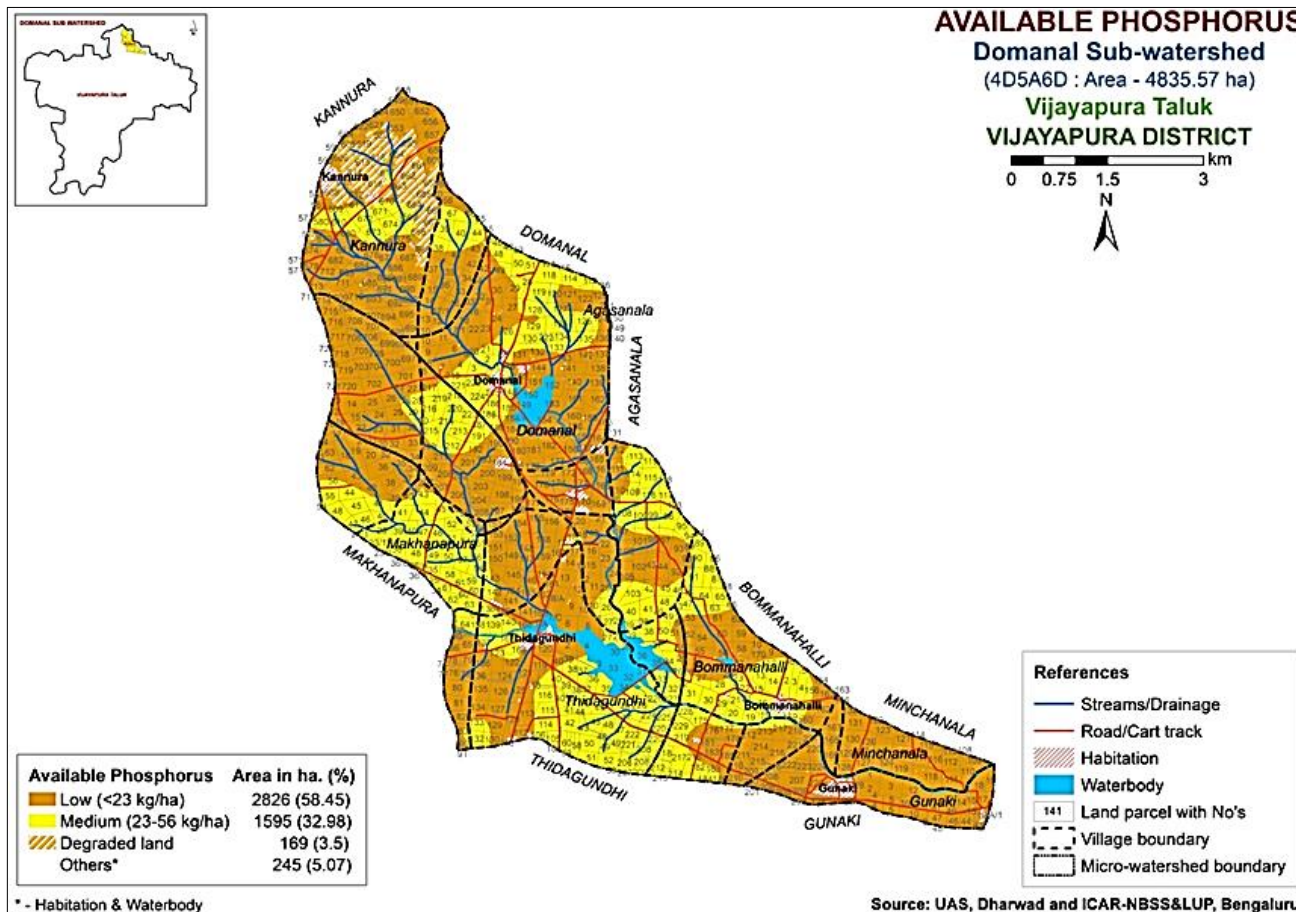


Fig 6: Available Phosphorus status of Domanal Sub watershed

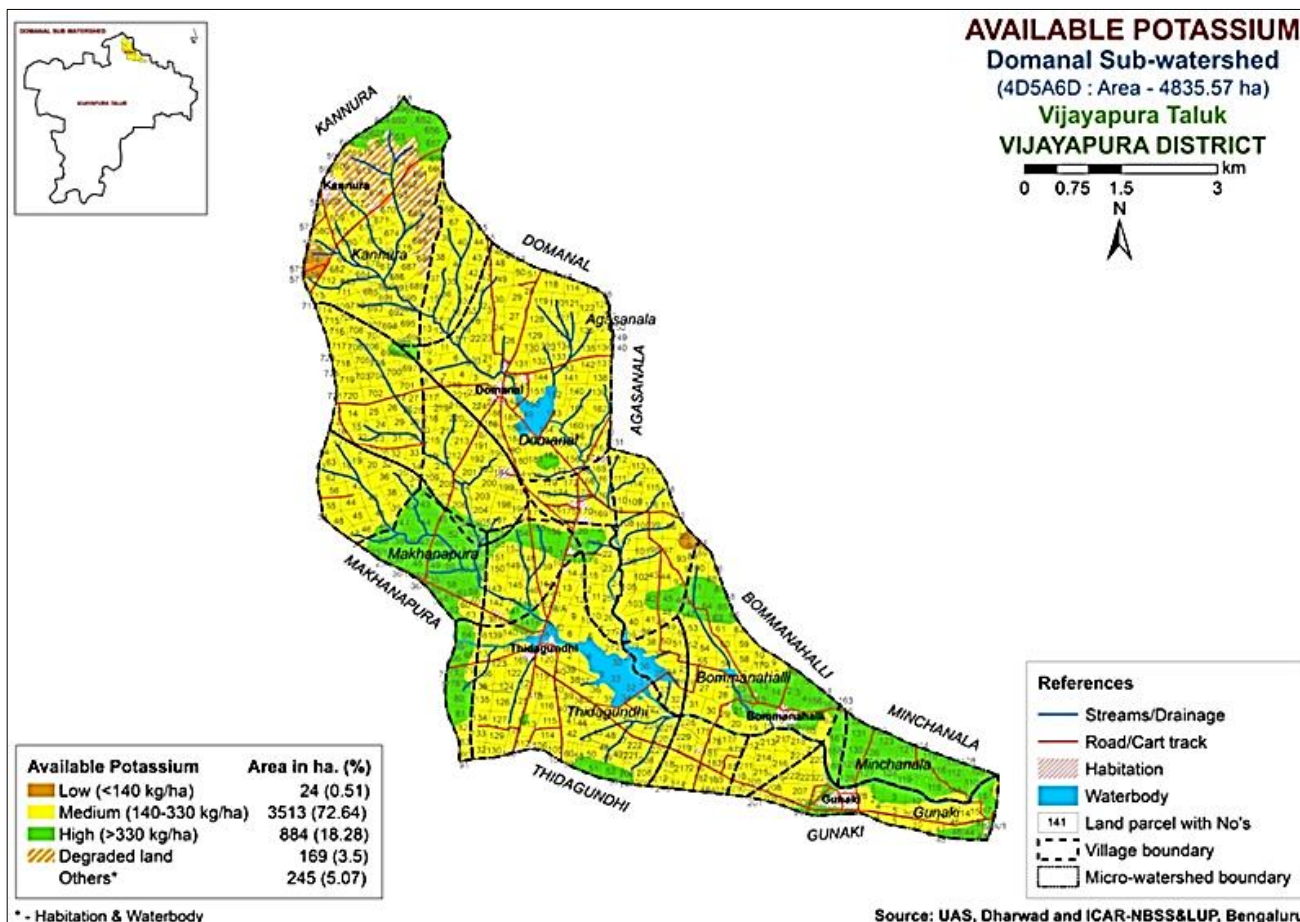


Fig 7: Available Potassium status of Domanal Sub watershed

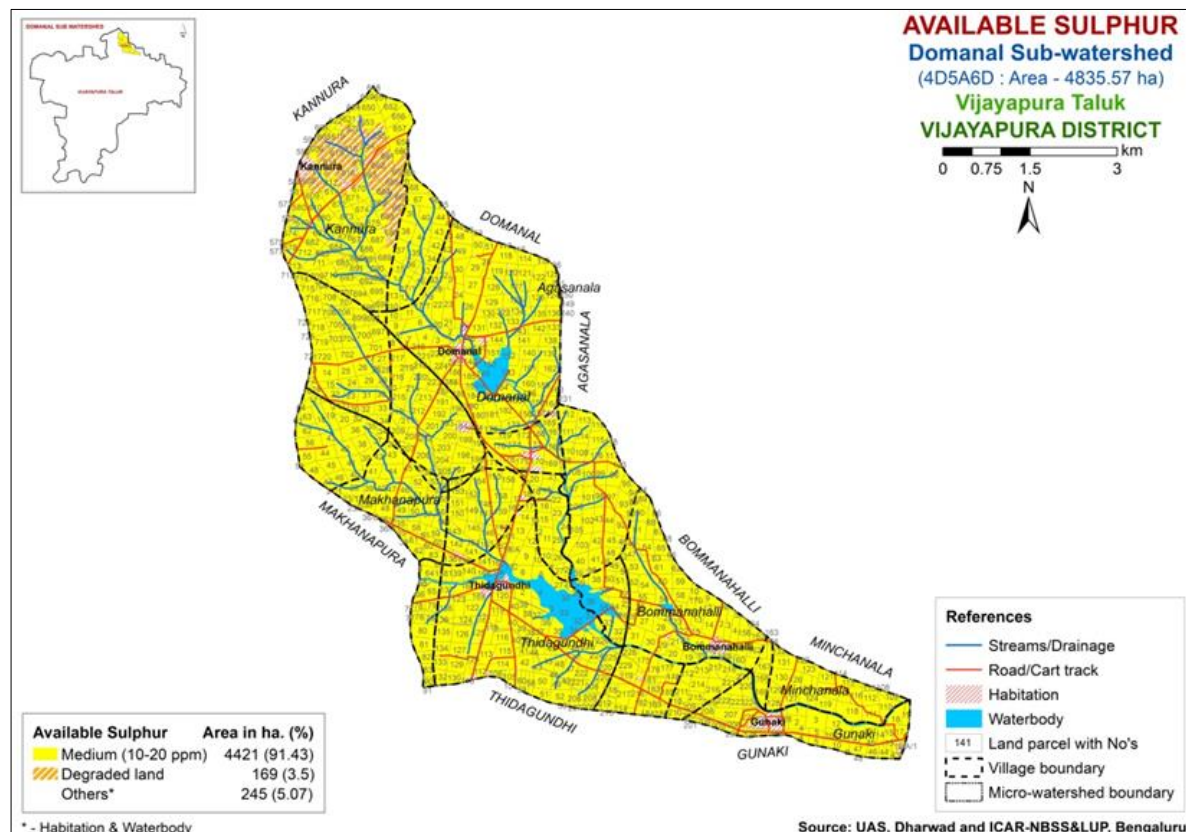


Fig 8: Available Sulphur status of Domanal Sub watershed

Available Micro Nutrients

The available zinc in the sub watershed was ranged from 0.04 to 4.84 mg kg⁻¹ with mean and SD value of 0.51 and 0.51 mg kg⁻¹ respectively (Table 4). The CV (88.08) for available Zn content indicates that, it varied spatially in the sub watershed. Mapping of available Zn by GIS revealed that, it was deficient in the 53.98 per cent of the study area and sufficient in 37.44 per cent of the area (Fig 9). The content of Zn increases with low pH and high organic carbon content but decreases with increase in pH. Since, the most of the soils are alkaline, low in OC and dominated by CaCO₃, zinc may be precipitated as hydroxides and carbonates as a result, their solubility and mobility might have decreased and reduced the availability. Similar results were reported by Ravi kumar *et al.*, (2007b) [11-12], Patil *et al.*, (2006) [7] and Pulakeshi *et al.*, (2012) [10].

Table 4: Available micro nutrients status in Domanal sub watershed

	Zn	Fe	MN	Cu	B
	mg kg ⁻¹				
Average	0.58	4.87	5.40	1.31	0.43
SD	0.51	1.95	3.28	0.68	0.17
Range	0.04-4.84	0.54-16.04	0.72-33.96	0.12-5.56	0.10-1.48
CV	88.08	40.02	60.72	51.48	39.82

The available iron in the sub watershed was ranged from 0.54 to 16.04 mg kg⁻¹ with mean and SD value of 4.87 and 1.95 mg kg⁻¹ respectively (Table 4). The CV (40.02) for available Fe content indicates that, it varied spatially in the sub watershed. Mapping of available Fe by GIS revealed that, it was deficient in the 39.01 per cent of the study area and sufficient in 52.42 per cent of the area (Fig 10). The low Fe content may be due to precipitation of Fe by CaCO₃ and decreased its availability. Similar results were also observed by Ravi kumar *et al.*, (2007b) [11-12] and Patil *et al.*, (2006) [7]. The available iron in

surface soils has no regular pattern of distribution as also reported by Nayak *et al.* (2002). This type of variation may be due to the soil management practices and cropping pattern adopted by different farmers.

The available Manganese in the sub watershed was ranged from 0.72 to 33.96 mg kg⁻¹ with mean and SD value of 5.40 and 3.28 mg kg⁻¹ respectively (Table 4). The CV (60.72) for available Mn content indicates that, it varied spatially in the sub watershed. Mapping of available Mn by GIS revealed that, it was sufficient in the entire study area. Sufficient content of manganese was observed by Ravi kumar *et al.* (2007b) [11-12] in Vertisols of Malaprabha command area, Pulakeshi *et al.* (2012) [10] in the soils of northern transition zone of Karnataka derived from chlorite schist and Manoj kumar (2011) [6] in the soils of northern transition zone of Karnataka derived from basalt.

The available copper in the entire sub watershed was sufficient and ranged from 0.12 to 5.56 mg kg⁻¹ with mean and SD value of 1.31 and 0.68 mg kg⁻¹ respectively (Table 4). The CV (51.48) for available Cu content indicates that, it varied spatially in the sub watershed. Mapping of available Cu by GIS revealed that, it was sufficient in the entire study area. Ravi kumar *et al.* (2007b) [11-12], Pulakeshi *et al.* (2012) [10] and Manojkumar (2011) [6] also observed sufficient status of available copper in soils of North Karnataka.

The available boron in the sub watershed was ranged from low to medium, and values are ranged from 0.10 to 1.48 mg kg⁻¹ with mean and SD value of 0.43 and 0.17 mg kg⁻¹ respectively (Table 4). The CV (39.82) for available boron content indicates that, it varied spatially in the sub watershed. Mapping of available boron by GIS revealed that, it was low in the 69.45 per cent area and medium in 21.97 per cent of study area. Ravi kumar *et al.* (2007b) [11-12], Pulakeshi *et al.* (2012) [10] and Manoj kumar (2011) [6] also observed sufficient status of available boron in soils of North Karnataka.

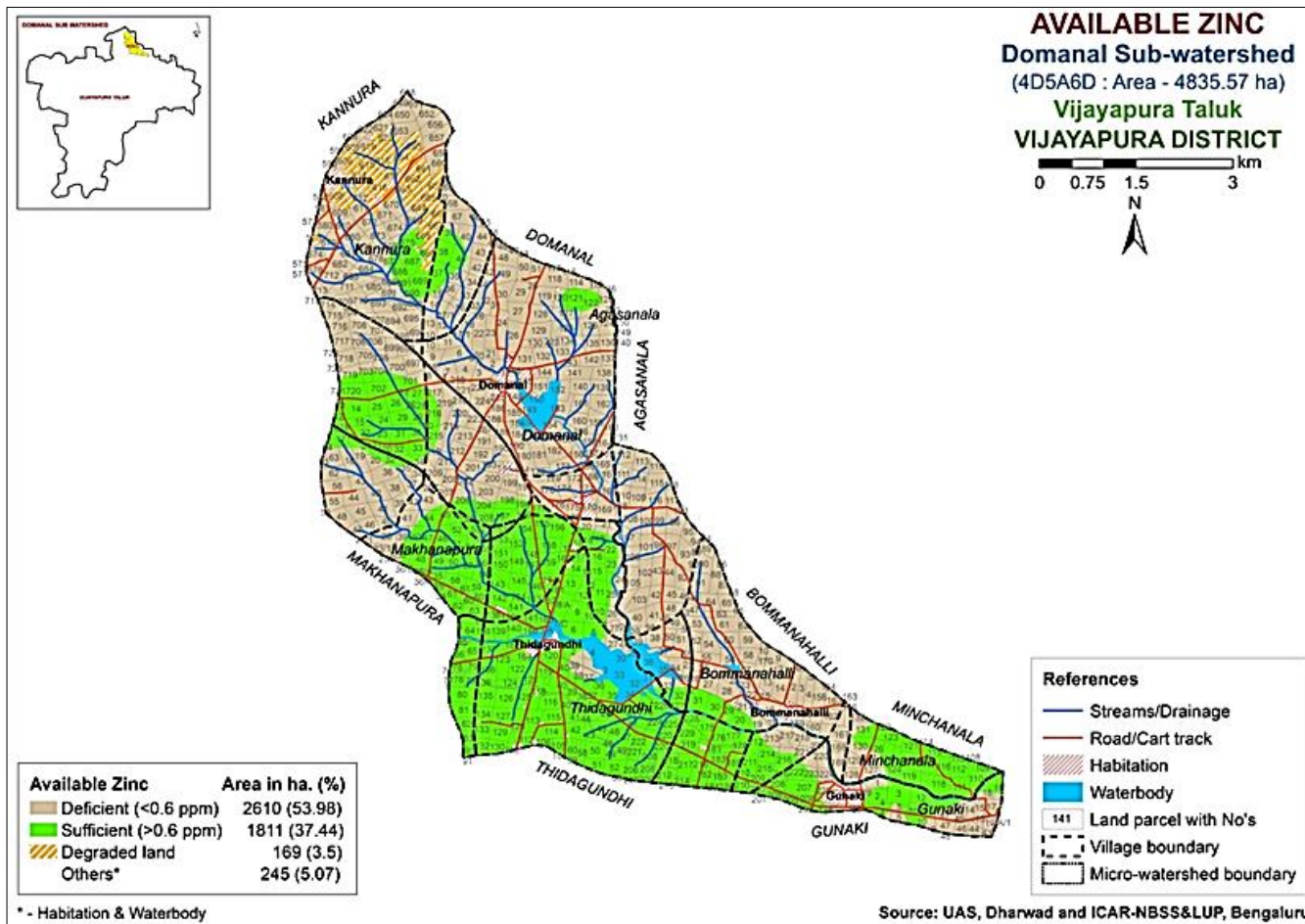


Fig 9: Available Zinc status of Domanal Sub watershed

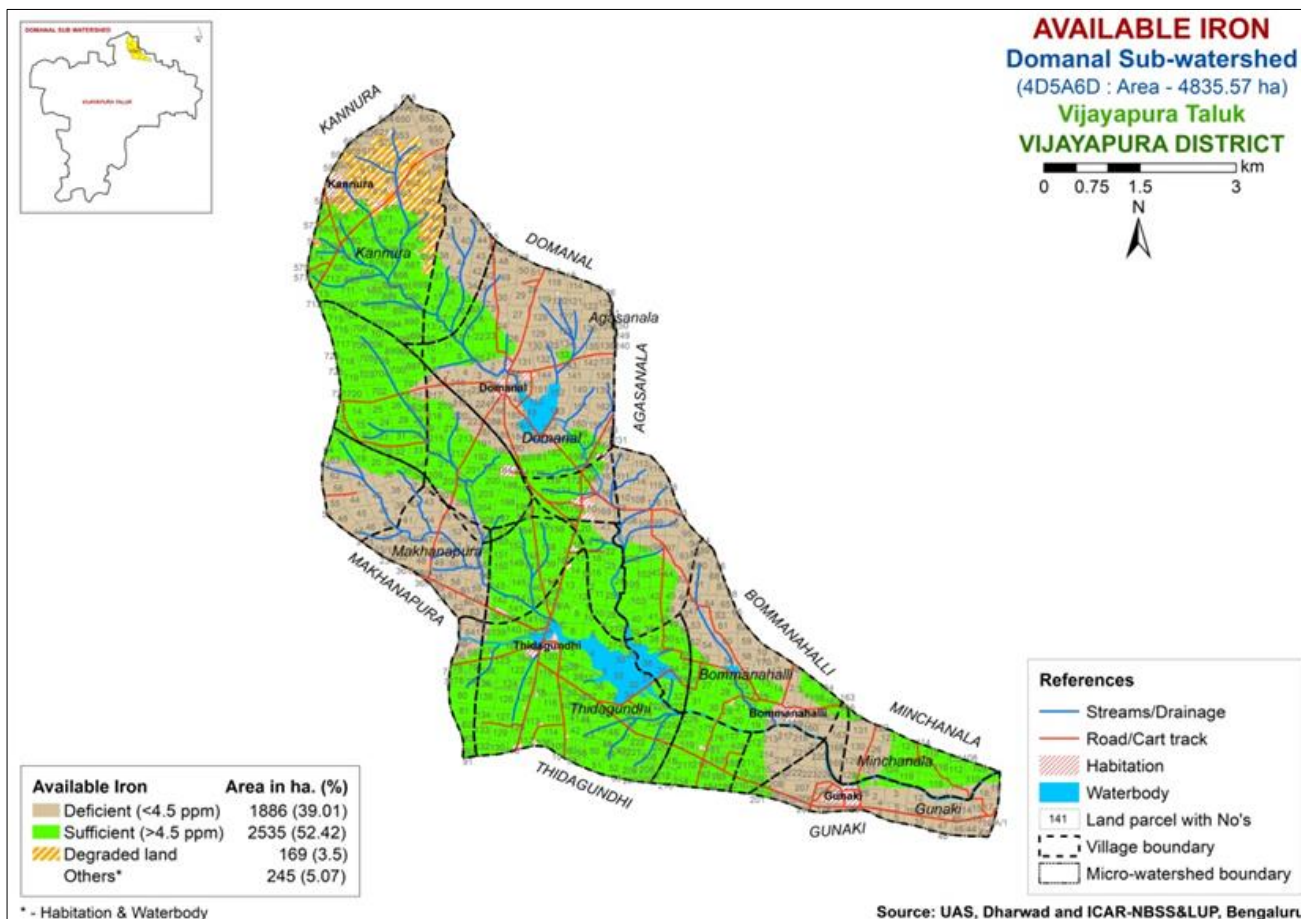


Fig 10: Available iron status of Domanal sub watershed

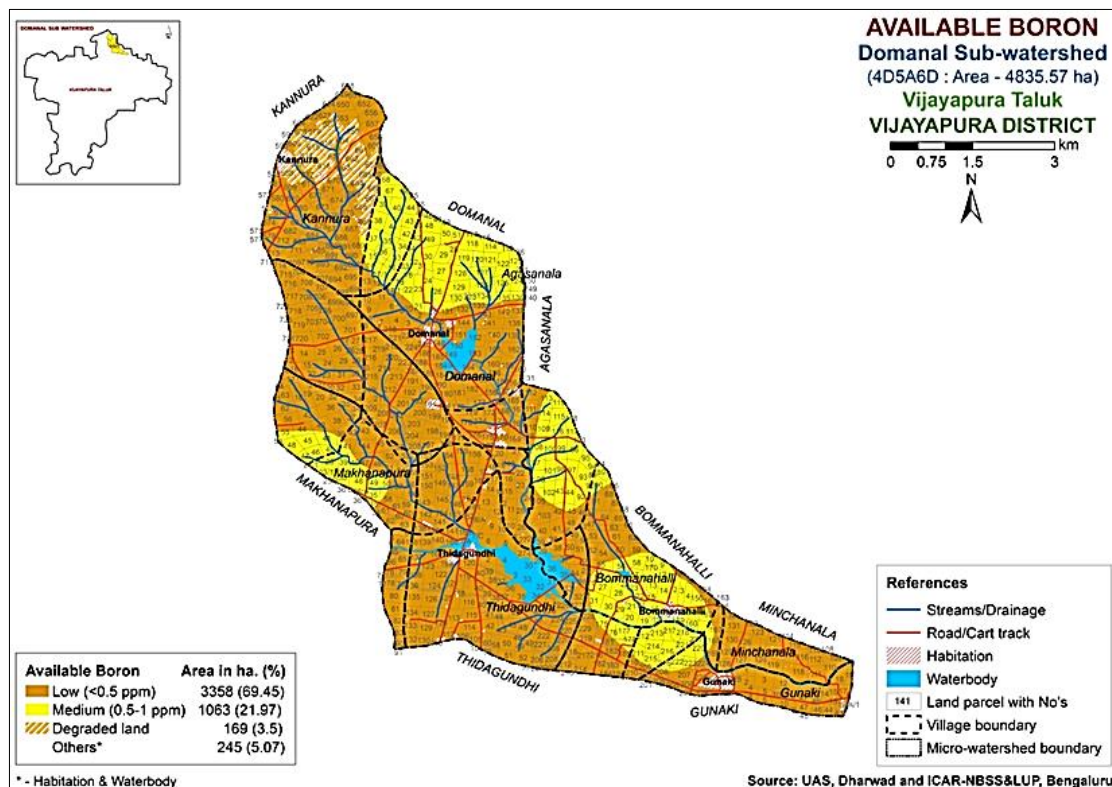


Fig 11: Available boron status of Domanal sub watershed

Conclusion

From the study, it can be concluded that, soils of Domanal sub-watershed in northern dry zone of Karnataka are slightly alkaline to strongly alkaline with non-saline to slight salinity. Alkaline soils in the study area need immediate attention for their management to arrest further degradation. Majority of area in micro-watershed is low to medium in nitrogen and available phosphorous, soil organic carbon, available potassium was low to high, available boron was low to medium and sulphur was medium. Regarding available micronutrients, zinc and iron were deficient in more than half of the sub watershed area, whereas copper and manganese were sufficient in the soils. The mapping of nutrients by GIS technique in the sub watershed revealed that major portion of the study area was deficient in available N, P, S, Zn and Fe are important soil fertility constraints indicating their immediate attention for sustained crop production. The deficient micronutrient may be replenished to avoid the crops suffering from their deficiency and for optimum utilization of other nutrients.

Acknowledgement

The study is part of the Sujala-III project funded by World Bank through Government of Karnataka. The authors duly acknowledge the support.

References

- Adornado HA, Yoshida M. Crop suitability and soil fertility mapping using geographic information system (GIS). *Agril. Info. Res.* 2008; 17:60-68.
- Helmke PA, Sparks DL. Lithium, sodium, potassium, rubidium and cesium. In *Methods of Soil Analysis, Part 3, Chemical Methods* (D.L. Sparks, Eds.) adison, Wisc.: SSSA and ASA, 1996, 551-574.
- Lindsay WL, Norvell WA. Development of DTPA soil test for zinc, iron, manganese and copper. *Soil Sci. Soc. America J.* 1978; 42:421-428.
- Nelson DW, Sommers LE. Total carbon, organic carbon, and organic matter. In *Methods of Soil Analysis, Part 3. Chemical Methods* (D.L. Sparks, Ed.) Madison, Wisc. SSSA and ASA, 1996, 961-1010.
- Olsen SR, Sommers LE. Phosphorus. In *Methods of Soil Analysis* (A.L. Page *et al.*, Eds.), Part 2, 2nd edition Madison, Wisconsin. American Society of Agronomy and Soil Science Society of America, 1982, 403-430.
- Manoj Kumar D. Characterization and classification of soils of a microwatershed on basalt parent rock in northern transition zone of Karnataka. M. Sc (Agri) Thesis, Univ. Agric. Sci., Dharwad (India), 2011.
- Patil PL, Radder BM, Patil SG, Aladakatti YR, Meti CB, Khot AB. Response of maize to micronutrients and moisture regimes in vertisols of Malaprabha Command, Karnataka. *J Indian Soc. Soil Sci.* 2006; 54:261-264.
- Patil PL, Radder BM, Aladakatti YR. Effect of Moisture Regimes, Zinc and Iron Levels on Yield, WUE and Nutrients Uptake in Chilli + Cotton Cropping System *J Indian Soc. Soil Sci.* 2011; 59:401-406.
- Prabhavati K, Dasog GS, Patil PL, Sahrawat KL, Wani SP. Soil Fertility Mapping using GIS in Three Agro-climatic Zones of Belgaum District, Karnataka. *J Indian Soc. Soil Sci.* 2015; 63:73-180.
- Pulakeshi PHB, Patil PL, Dasog GS, Radder BM, Bidari BI, Mansur CP. Mapping of nutrients status by geographic information system (GIS) in Mantagani village under northern transition zone of Karnataka. *Karnataka Journal of Agricultural Science.* 2012; 25:332-335.
- Ravi Kumar MA, Patil PL, Dasog GS. Mapping of Nutrients Status of 48A Distributary of Malaprabha Right Bank Command of Karnataka by GIS Technique. I-Major Nutrients. *Karnataka J Agric. Sci.* 2007a; 20:735-737.
- Ravi Kumar MA, Patil PL, Dasog GS. Mapping of Nutrients Status of 48A Distributary of Malaprabha Right Bank Command of Karnataka by GIS Technique. II-

- Micro Nutrients. Karnataka J Agric. Sci. 2007b; 20:738-740.
13. Sahrawat KL, Burford JR. Modification of alkaline permanganate method for assessing the availability of soil nitrogen in upland soils. Soil Science. 1982; 133:53-57.
 14. Shankaraiah M, Sreemannarayana B, Srinivasaraju A. Studies on the status and distribution of sulphur in black soils (Vertisols) of Karimnagar district, Andhra Pradesh. Indian Journal of Dryland Agril. Res. Devp. 2006; 21:74-79.
 15. Shiva Prasad CR, Reddy RS, Sehgal J, Velayutham M. Soils of Karnataka for optimizing land use. NBSS Publications. 1998; 47:15.
 16. Sparks DL. Methods of Soil Analysis Part-3: Chemical Methods. Soil Sci. Soc. America, USA.
 17. Srikant KS, Patil PL, Dasog GS, Gali SK. Mapping of available major nutrients of a microwatershed in northern dry zone of Karnataka. Karnataka J Agric. Sci. 2008; 21:391-395.
 18. Tabatabai MA. Sulfur. In Methods of Soil Analysis, Part 3. Chemical Methods (D.L. Sparks, Ed.). Madison, Wisconsin. American Society of Agronomy and Soil Science Society of America, 1996, 921-960.
 19. Wani SP. Taking soil science to farmers' doorsteps through community watershed management. J Indian Soc. Soil Sci. 2008; 56:367-377.